

the

PEPTIDE 101 GUIDE

A MODERN APPROACH TO BRAIN &
BODY OPTIMIZATION



WHITEBUTTERFLYCLINIC.COM

WHITE BUTTERFLY CLINIC



ABOUT THE AUTHOR

I'm Dr. Héctor Rodríguez—psychiatrist, theologian, and unapologetic healer for those who feel too much, think too deeply, and never quite fit the mold. I built The White Butterfly as a home for the sensitive, the intense, the gifted, the burned-out, and the misfits.

I didn't create The White Butterfly because the world needed another mental health brand.

I created it because I never saw myself in the system I was trained in.

Because healing felt too sanitized.

Because psychiatry left no room for the sacred, the bilingual, the broken-but-brilliant.

I made The White Butterfly for the misfits.

For the ones who smile in public and spiral in private.

For the sensitive ones who were told they're too much.

For those who grew up with trauma, church guilt, and ambition in the same body.

For those who know they're meant for more—but can't feel their mind anymore.

The White Butterfly is my rebellion.

It's psychiatry reimagined.

It's sacred. It's clinical. It's poetic.

It's where neuroscience meets soul.

This is for the outsiders who are ready to come home to themselves.



01

WHAT ARE PEPTIDES?

Peptides are short chains of amino acids that act as messengers in the body.

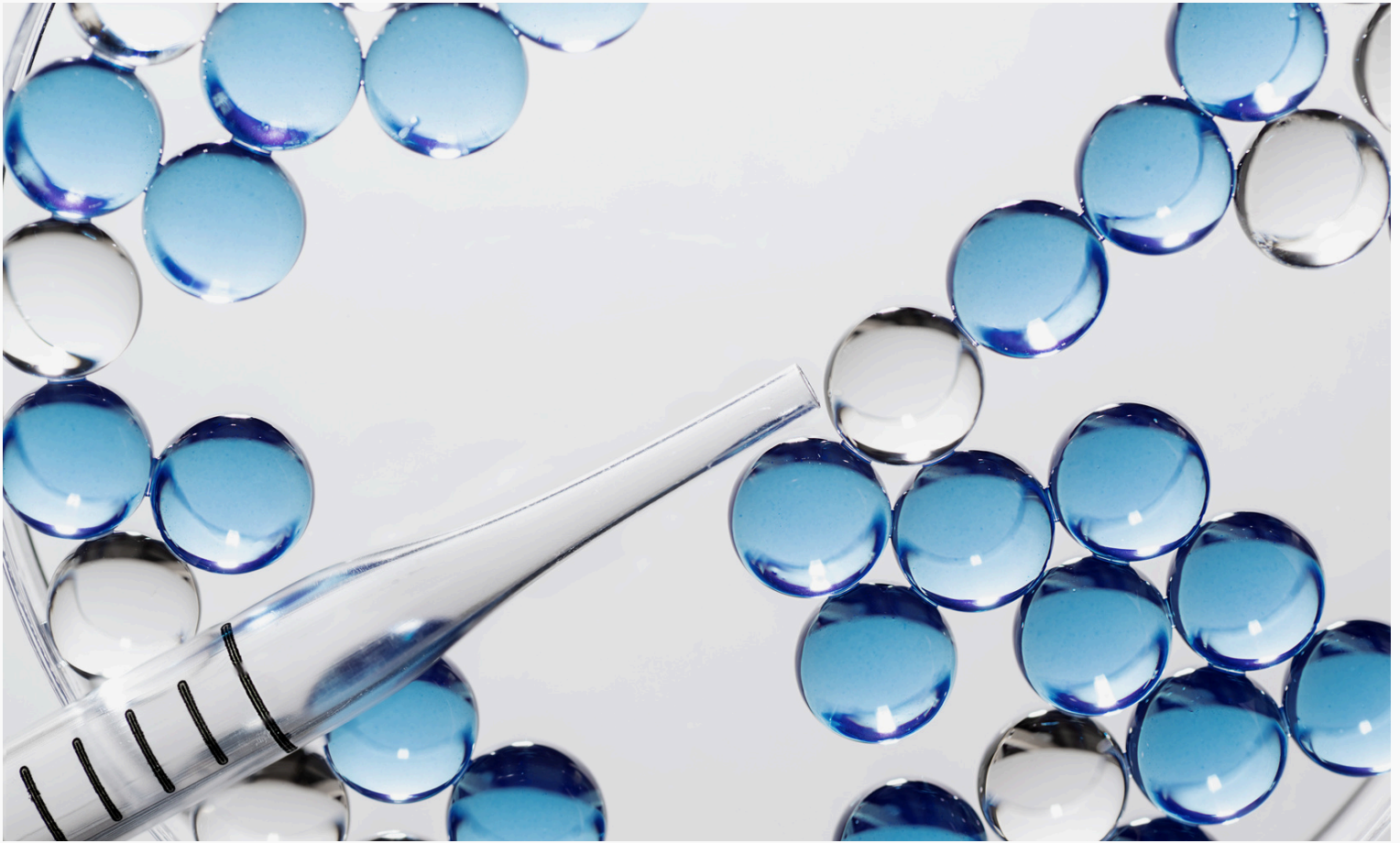
They tell your body what to do and when to do it.

Think of them as:

→ signals that regulate how your body functions

They influence:

- brain function
- metabolism
- hormones
- immune system
- recovery and healing



02

WHY ARE PEPTIDES IMPORTANT?

Over time, the body's natural signaling can become less efficient due to:

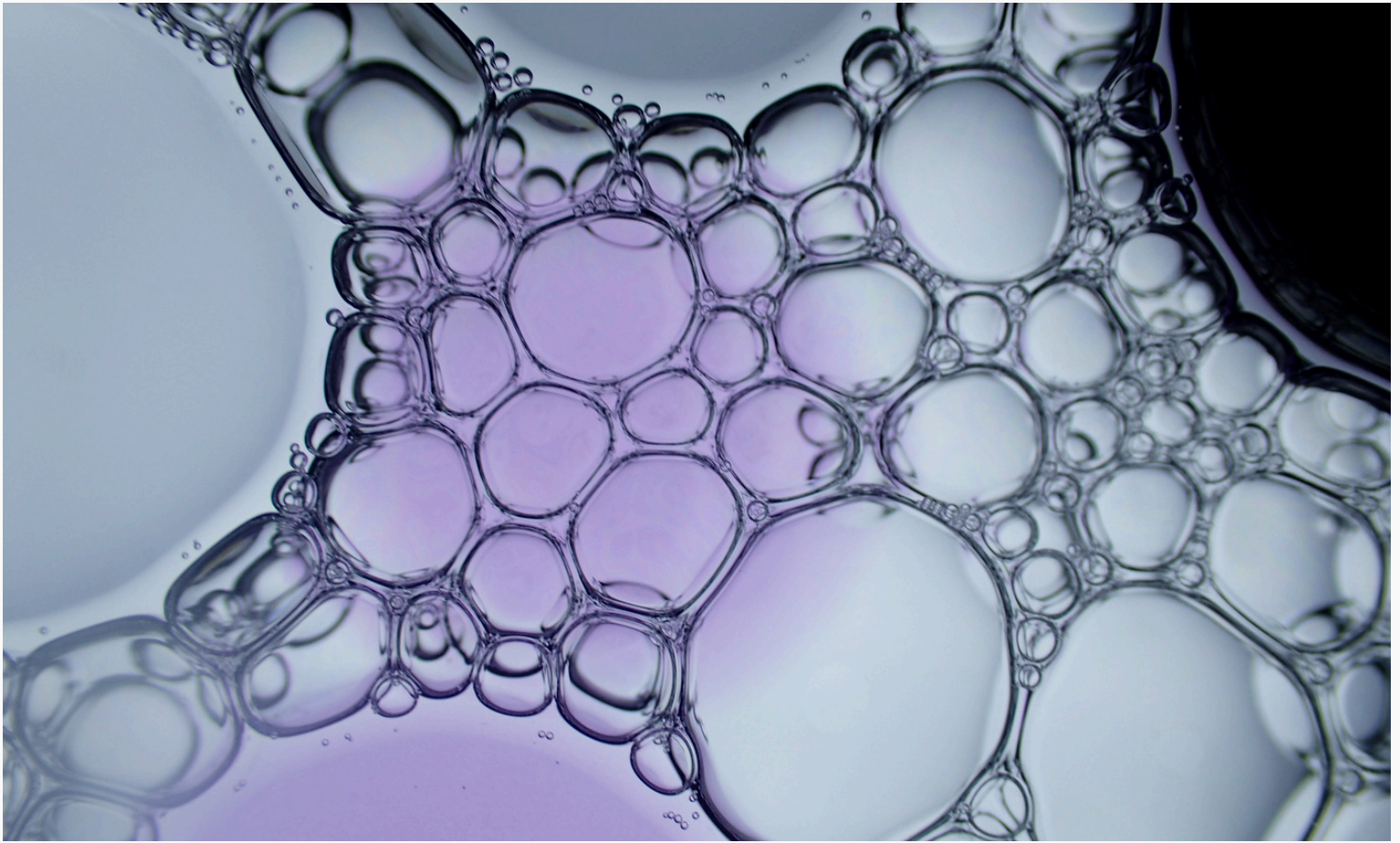
- chronic stress
- poor sleep
- inflammation
- aging
- lifestyle factors

This can lead to:

- fatigue
- weight gain
- anxiety
- poor focus
- hormonal imbalance

Peptide therapy helps:

→ restore these signals



03

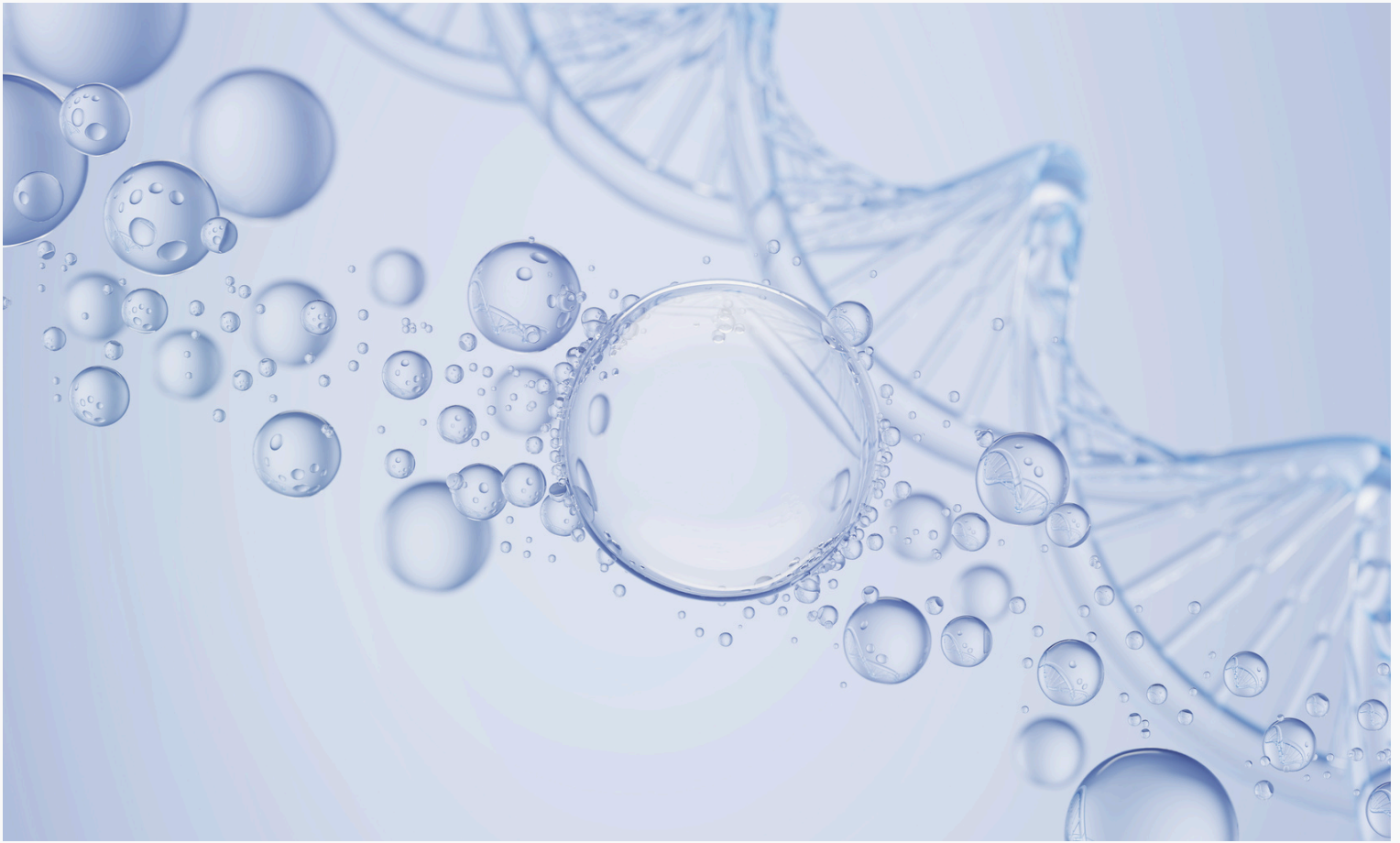
HOW PEPTIDES WORK?

Peptides bind to specific receptors in the body and trigger responses such as:

- increasing energy production
- improving brain function
- reducing inflammation
- enhancing fat metabolism
- supporting hormone balance

Unlike many medications, peptides:

→ work with the body's natural systems, not against them



04

DO PEPTIDES WORK ON THE BRAIN?

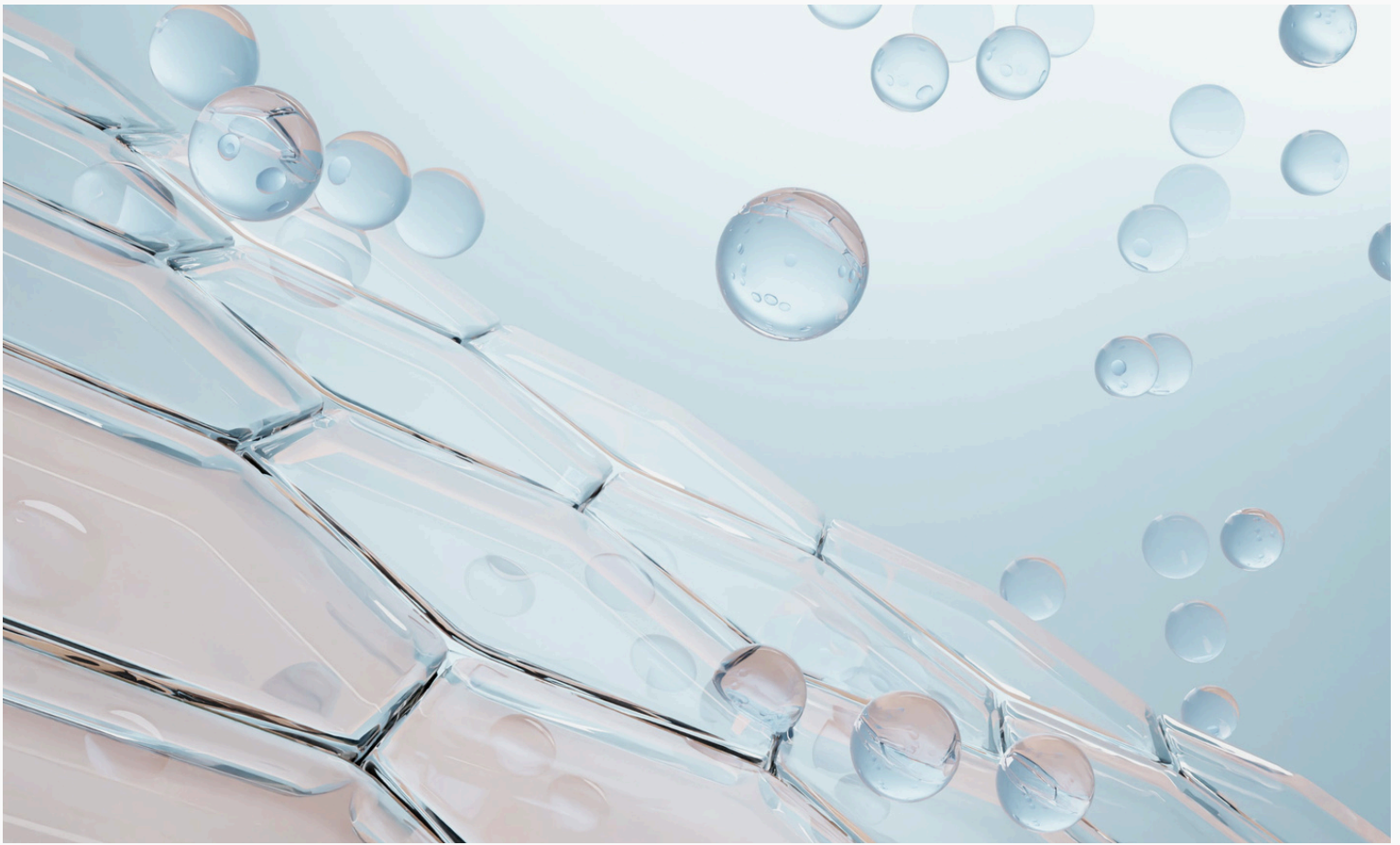
Some peptides act directly on the brain:

- improve memory
- reduce anxiety
- enhance focus

Others work on the body but still improve brain function indirectly by:

- reducing inflammation
- improving metabolism
- balancing hormones

The brain and body are connected—peptides help optimize both.



05

WHAT CAN PEPTIDES HELP WITH?

At The White Butterfly Clinic, we use peptides to support:

Brain & Mental Health

- stress reduction
- brain fog
- emotional regulation

Energy & Performance

- chronic fatigue
- burnout
- low motivation

Metabolic Health

- weight loss
- insulin resistance
- visceral fat

Recovery & Longevity

- inflammation
- injury recovery
- aging support



06

ARE PEPTIDES SAFE?

Peptides are generally well tolerated when:

- prescribed appropriately
- sourced from reputable pharmacies
- monitored by a physician

However:

- not all peptides are FDA-approved
- quality and dosing matter
- guidance is essential



07

WHY YOU SHOULDN'T DO THIS ALONE

Peptides are powerful—but they require:

- correct selection
- proper dosing
- understanding of your biology

Without guidance, people often:

- choose the wrong peptide
- use incorrect dosing
- miss the underlying issue



OUR APPROACH

At The White Butterfly Clinic, we don't just prescribe peptides.

We evaluate:

- brain function
- stress system (cortisol)
- metabolism
- inflammation
- lifestyle

Then we design a targeted protocol.

The Bottom Line

Peptides are not magic.

But when used correctly, they can:

- restore function
- improve performance
- support long-term health

Scan this QR code for comprehensive assessment

